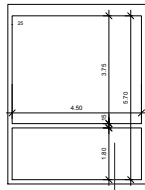
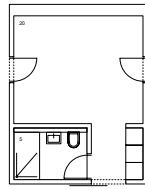




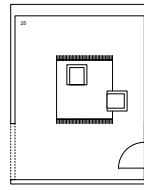
**swisswoodhouse** est une réflexion menée conjointement avec Renggli SA découlant de la maison familiale. Le concept novateur de la maison permet une très grande flexibilité au niveau de l'utilisation des espaces. Le concept de base de la maison repose sur un module à fonction neutre de 25 m<sup>2</sup>. Les acquéreurs peuvent concevoir le plan de leurs logements d'après un catalogue en choisissant le nombre de modules souhaités selon leurs besoins.



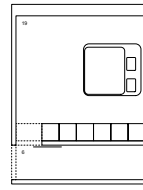
MODULE DE BASE



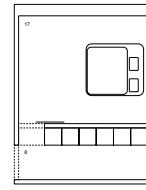
TYPE ENTRÉE / DOUCHE



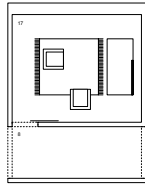
TYPE ENTRÉE



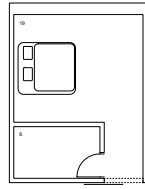
TYPE CHAMBRE / ACCÈS



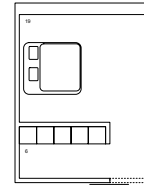
TYPE CHAMBRE / ACCÈS



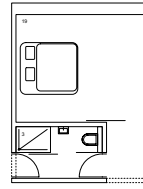
TYPE CHAMBRE / ACCÈS



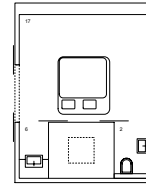
TYPE DORMIR / REDUIT



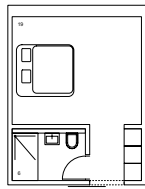
TYPE DORMIR / DRESSING



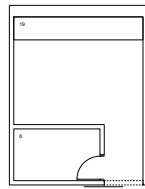
TYPE DORMIR / DOUCHE



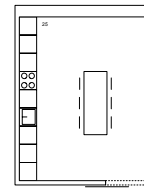
TYPE DORMIR / DOUCHE / WC



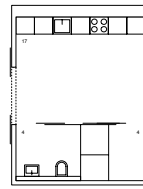
TYPE HÔTEL / STUDIO



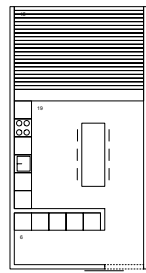
TYPE RANGEMENT / REDUIT



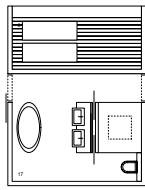
TYPE CUISINE



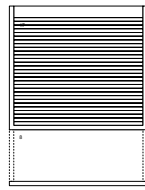
TYPE CUISINE / REDUIT / WC



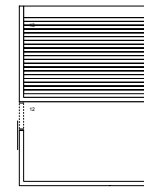
TYPE CUISINE / SERVICE / LOGGIA



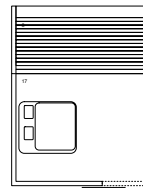
TYPE WELLNESS



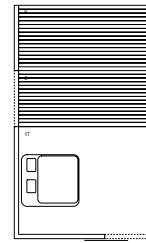
TYPE LOGGIA / ACCÈS



TYPE LOGGIA / CHAMBRE

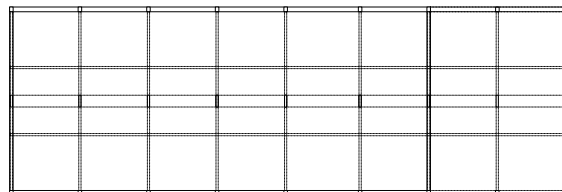


TYPE LOGGIA / CHAMBRE



TYPE LOGGIA / CHAMBRE

CHOIX POSSIBLES BASÉS SUR LE MODULE DE BASE



MODULE DE BASE



**swisswoodhouse**  
Appartements modulaires

*Conception*  
Bauart Architectes et Urbanistes SA  
Renggli AG ([www.renggli-haus.ch](http://www.renggli-haus.ch))

*Système*  
Construction en bois

*Surface*  
Individuelle selon des modules  
de 25 m<sup>2</sup>

Bauart Architectes et Urbanistes SA  
Frei | Graf | Jakob | Rey | Ringeisen | Ryter

Laupenstrasse 20, 3008 Bern  
T 031 385 15 15  
Crêt-Taconnet 17, 2002 Neuchâtel  
T 032 858 15 15  
Hardturmstrasse 173, 8005 Zürich  
T 043 366 65 65

[www.bauart.ch](http://www.bauart.ch)